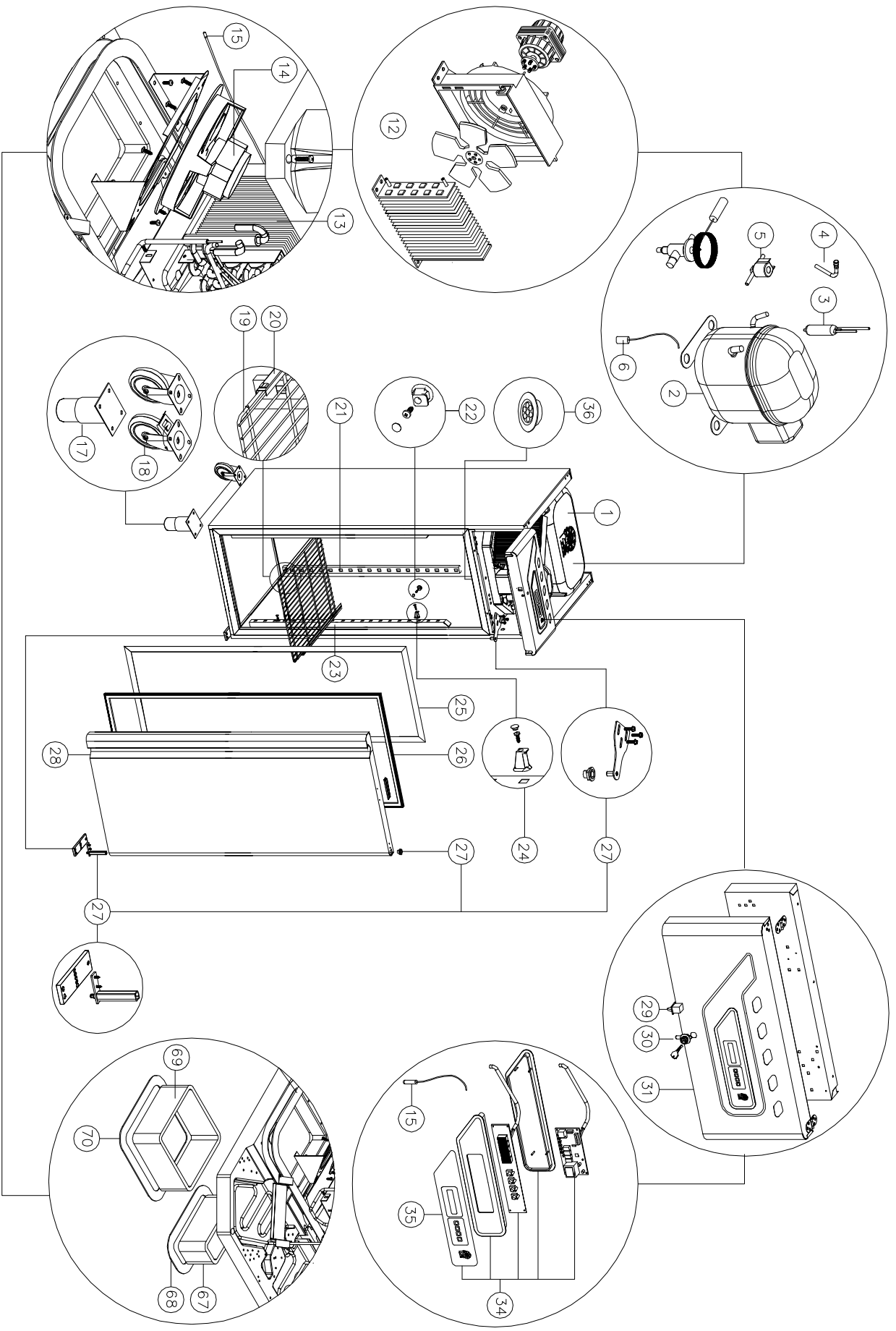


<i>Revised on 26/08/2013</i>		
Model:	EGM7	
ITEM N°	PART NUMBER	DESCRIPTION
1	90010740	MONOBLOC X REFR CABINET 700 NEW
2	Q32-0268	COMPR.NEK6217GK CSR R404 220V/1/50H
3	S06-0030	MOLECOLAR FILTER GR.30
4	P52-0054	CHARGING VALVE
5	R30-0035	SOL.VALVE1028/2S 1/4"ODS 230V50/60
6	S06-0038	NET FILTER P/N 16SS7D-SBJ-Q 16A
12	Q32-0538	CONDENSER MOTOR STVF124
13	Q32-0694Y	MONOBL.CAB.EVAPORATOR R6T8
14	Q32-0132	MOTOR 18W ELCO NET418PVN001
15	Q32-0578	FEELER NTC SEMITEC 3MT SN691300
17	Q32-0007	FEET 2" C/P A304 MM 85X100X2,5
18	80010350	KIT CASTORS GALV/ST.CABINET 700 GOL
19	Q32-0002	PL.COATED RACK MM.530X650 CAB.DE80
20	4080584	SS GUIDE mm630 FOR CABINET DEPHT 80
21	4080163	REMOVABLE POSTERIOR RACK NEW
22	H49-0063	LITTLE SUPPORT X POST RACK L26X23PP
23	4080153	FRONT REMOVABLE RACK UPRGHT
24	H49-0062	BIG SUPPORT X ANT. RACK L34X23PP
25	H62-295060	PVC BASE PROFILE IMAP 01032001
26	H25-0051	DOOR GASKET 660X1585 FOR CAB. VIP
27	89000030	DOOR HINGES KIT FOR CABINET SILVER
28	60000040	S/S DOOR L/R FOR CABINET GOLD
29	R25-0086	MICRO SWITCH GREY MOD.60B 8AMP.
30	80010310	LOCK FOR CABINET DOOR
31	4160195S	WELDED FRONT PANEL CAB.700LT GOLD
34	80100040	ELECTRONIC CONTROL COMPLETE KIT CAB
35	B99-0213DEF	LABEL POL.GOLD 4T 340x85 ENODIS
36	R50-0160	LED LIGHTING UCOME R7800
67	80110520	AIR OUTLET DUCT
68	H25-0040	GASKET AERSTOP N12 149X294X5
69	80010580	AIR INLET DUCT
70	H25-0038	GASKET AERSTOP N12 304X299X5



Stabilimento: 83051 Nusco (AV) Zona Ind.le
 Sede Legale: Montemiletto (AV) Via Frai benedetto
 Tel. 0827/607318/19/44
 Fax. 0827/607009
 METATA LA RIPRODUZIONE E COMUNICAZIONE A TERZI
 DI QUESTO LIBRO SENZA AUTORIZZAZIONE SCRITTA

DENOMINAZIONE		FOGLIO		REV. N°		DESCRIZIONE MODIFICA	
GM7		00		00			
DESIGNATORE CAD		DESIGNATORE REV.		DESIGNATORE REV.			
DESMON *		DESMON *		DESMON *			
DATA DI REALIZZAZIONE		DATA DI REALIZZAZIONE		DATA REV.			
30-11-2012		30-11-2012					