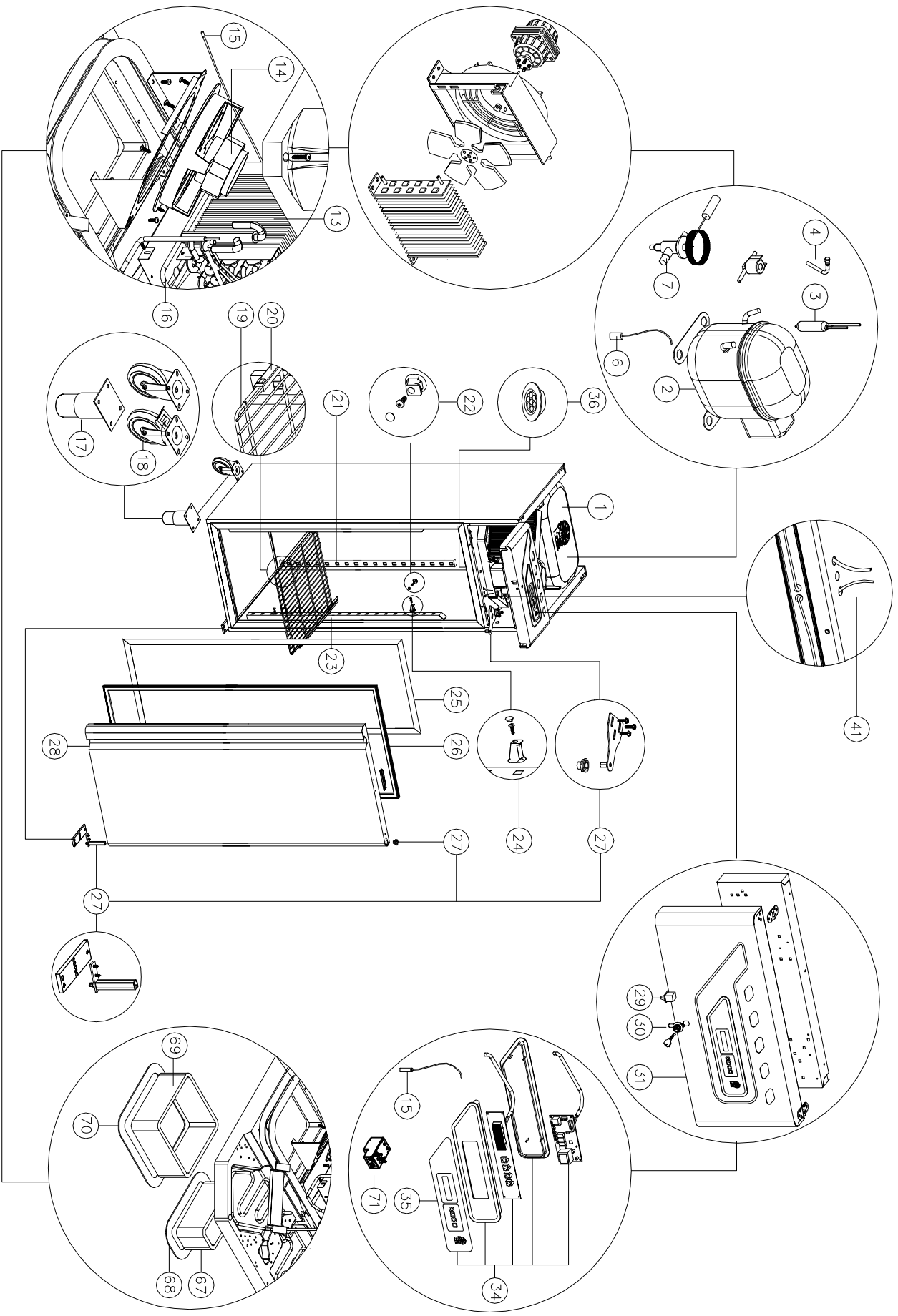


<i>Revised on 26/08/2013</i>		
Model:	<u>EGB7</u>	
ITEM N°	PART NUMBER	DESCRIPTION
1	90111740	MONOBLOC X FREZ CABINET 1400/700 NE
2	Q32-0265	COMPR.NT2192GK CSR R404 220V/1/50Hz
3	S06-0030	MOLECOLAR FILTER GR.30
4	P52-0054	CHARGING VALVE
6	S06-0038	NET FILTER P/N 16SS7D-SBJ-Q 16A
7	R30-0056	TX VALVE.TUB 0.28 R404 ORIF.#2
8	Q32-0376	CONDENSER UNIT STFT 18227 STD
9	R05-0245	ELECTRI MOTOR 8 WATT M4Q045-CA01-31
10	Q32-0166	AIR DUCT CF27 234081013
13	Q32-0692Y	EVAPORATOR COIL R9T8
14	R05-0290	E.MOT.18-25W 2500G 230V50HZ LN02201
15	Q32-0578	FEELER NTC SEMITEC 3MT SN691300
16	R35-100RS3335	HEATING EL.230V 350W EVAP.MONOBL
17	Q32-0007	FEET 2" C/P A304 MM 85X100X2,5
18	80010350	KIT CASTORS GALV/ST.CABINET 700 GOL
19	Q32-0002	PL.COATED RACK MM.530X650 CAB.DE80
20	4080584	SS GUIDE mm630 FOR CABINET DEPHT 80
21	4080163	REMOVABLE POSTERIOR RACK NEW
22	H49-0063	LITTLE SUPPORT X POST RACK L26X23PP
23	4080153	FRONT REMOVABLE RACK UPRGHT
24	H49-0062	BIG SUPPORT X ANT. RACK L34X23PP
25	H62-295060	PVC BASE PROFILE IMAP 01032001
26	H25-0051	DOOR GASKET 660X1585 FOR CAB. VIP
27	89000030	DOOR HINGES KIT FOR CABINET SILVER
28	60000040	S/S DOOR L/R FOR CABINET GOLD
29	R25-0086	MICRO SWITCH GREY MOD.60B 8AMP.
30	80010310	LOCK FOR CABINET DOOR
31	4160195S	WELDED FRONT PANEL CAB.700LT GOLD
34	80100040	ELECTRONIC CONTROL COMPLETE KIT CAB
35	B99-0213DEF	LABEL POL.GOLD 4T 340x85 ENODIS
36	R50-0160	LED LIGHTING UCOME R7800
41	R35-0002	RESISTANCE 44W 220V L4400 CAB+ET139
67	80110520	AIR OUTLET DUCT
68	H25-0040	GASKET AERSTOP N12 149X294X5
69	80010580	AIR INLET DUCT
70	H25-0038	GASKET AERSTOP N12 304X299X5
71	R35-0028	POWER RELAY 65,31,82300000 230V 20A



DESMON

Stabilimento: 83051 Nusco (AV) Zona Ind.le
 Sede Legale: Montemiletto (AV) Via Frai benedetto
 Tel. 0827/607318/19/44
 Fax. 0827/607009
 VERBA LA RIPRODUZIONE O COMUNICAZIONE A TERZI
 DI QUESTO LIBRO SENZA AUTORIZZAZIONE SCRITTA

DENOMINAZIONE

GB7

FOGLIO

00

REV. N°

00

DESCRIZIONE MODIFICA

DISEGNATORE CAD

Di Paolo V.

DISEGNATORE REV.

DATA DI REALIZZAZIONE

04-07-2013

DATA REV.