

MERRYCHEF conneX SERIES OVENS

SERVICE PARTS LISTS

Merrychef conneX 12

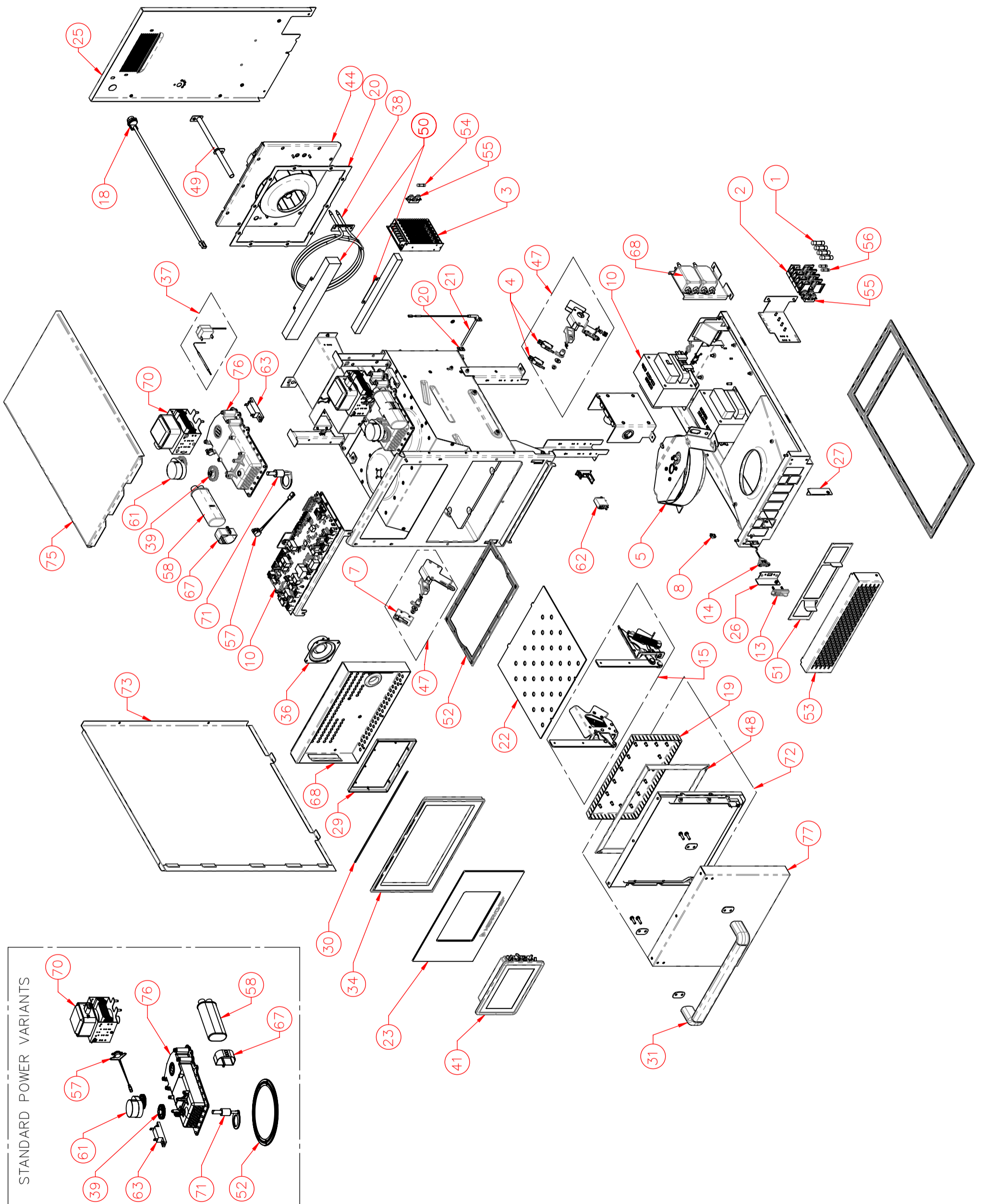
[50Hz / 60Hz - 13A - 15A/16A/20A - 30A Models]

Pages 2 to 8

Merrychef conneX 16

[50Hz / 60Hz - 13A - 15/16 - 30A Models]

Pages 9 to xx



Merrychef conneX 12 Oven

Recommended Parts List

Recommended Min Stock Holding & Service List

Service Manual Exploded View	Part Number	Description	Qty Per Oven	Unit	1-10 Ovens	11-50 Ovens	51-100 Ovens	Recommended Service List	e2s V2 Parts Comparison
1	30Z1535	25A FUSE 250V UL & CSA	4	EA	4	12	24	2	Same
2	30Z1178	30A FUSE HOLDER	4	EA	4	12	24		Same
3	30Z1609	12V DC SWITCH MODE POWER	1	EA	1	3	6		Unique
4	30Z1477	MICROSWITCH SHORT ARM	2	EA	2	6	12	2	Same
5	PSR298	COOLING FAN ASSY	1	EA	1	3	6		Same
7	30Z1566	SHORT LEVER MICROSWITCH	1	EA	1	3	6	1	Same
8	30Z1626	AIR FILTER LONG M/SWITCH	1	EA	1	3	6	1	Unique
10	P30Z5048	CONTROL IO ASSY	1	EA	1	3	6	1	Unique
11	P30Z5044	VFD SPEED CONTROLLER	1	EA	1	3	6		Unique
13	PSR2100	USB COVER ASSY	1	EA	1	3	6		Unique
14	31Z0704	ADAPTOR USB LEAD	1	EA	1	3	6		Unique
15	PDR0386	DOOR HINGE KIT (PAIR)	1	EA	1	3	6	1	Same
18	30Z1619	RJ45 PANEL MOUNT	1	EA	1	3	6		Same
19	DB0031	DOOR CHOKE PLATE	1	EA	1	3	6		Same
20	PSB391	X12 GASKET KIT	1	EA	1	3	6		Same
21	DR0243	THERMOCOUPLE K-700	1	EA	1	3	6	1	Same
22	DY0108	UPPER IMPINGER PLATE	1	EA	1	3	6	1	Same
23	DY0079	X12 GLASS OVERLAY	1	EA	1	3	6	1	Unique
25	SY311	REAR CASEWORK ASSY	1	EA	1	3	6		Unique
26	DR0207	LH AIR FILTER BRACKET	1	EA	1	3	6		Unique
27	DR0205	RH AIR FILTER BRACKET	1	EA	1	3	6		Unique
29	DR0291	CONTROLLER CLAMP BRK	1	EA	1	3	6		Unique
30	DY0103	X12 CONTROL PANEL SEAL	1	EA	1	3	6		Unique
31	PSY210	X12 DOOR HANDLE ASSY	1	EA	1	3	6		Unique
34	DY0088	CONTROL PANEL SURROUND	1	EA	1	3	6		Unique
36	DR0021	HARMONISED SPEAKER	1	EA	1	3	6		Same
37	30Z1589	CAVITY OVERHEAT STAT	1	EA	1	3	6	1	Same
38	PDR0142	HEATER ELEMENT 2200W KIT	1	EA	1	3	6		Same
41		COMMON CONTROLLER UI	1	EA	1	3	6	1	Unique
44	PSY223	MF CONVEC MOTOR KIT	1	EA	1	3	6		Unique
47	PSR155	DOOR INTERLOCK ASSY KIT	1	EA	1	3	6		Same
48	PSB316	DOOR SEAL ASSEMBLY	1	EA	1	3	6	1	Same
49	PSY315	X12 STEAM PIPE ASSY	1	EA	1	3	6		Same
50	DY0068	X12 UPPER CATALYST	1	EA	1	3	6		Same
50	DY0070	X12 LOWER CATALYST	1	EA	1	3	6		Same
51	DR0197	AIR FILTER	1	EA	1	3	6	1	Unique
60	30Z1593	MAINS FILTER	2	EA	2	6	12		Same
62	30Z1563	RELAY	1	EA	1	3	6	1	Same
72	PSY321	X12 DOOR FRAME ASSY	1	EA	1	3	6		Unique
Not Shown	30Z1624	RJ45 WATERPROOF CAP	1	EA	1	3	6		Unique
Not Shown	30Z1642	RJ45 CONNECTOR WITH LEAD	1	EA	1	3	6		Unique
Not Shown	31Z0115	INSULATOR PAD	2	EA	2	6	12		Same
Not Shown	31Z0186	SILASTIC BLACK (DOOR SEAL)		TUBE	1	3	6	1	Same
Not Shown	32Z7095	PERSONALITY MOD I/O SRB	1	EA	1	3	6	1	Unique
Not Shown	DB0391	AIR DIFFUSER	1	EA	1	3	6		Same
Not Shown	DR0356	STEAM PIPE DIFFUSER	1	EA	1	3	6		Same
Not Shown	PDR0112	SCREW ON FOOT	2	EA	2	6	12		Same
Not Shown	PDY0124	X12 CAVITY INSULATION KIT	1	EA	1	3	6		Same
Not Shown	PSB1207	PTFE SHELF x4 STUB KIT	1	EA	1	3	6		Same
Not Shown	PSY214	X12 DOOR INSULATION KIT	1	EA	1	3	6		Unique

Merrychef conneX 12 Oven

Recommended Parts List

Recommended Min Stock Holding & Service List

Service Manual Exploded View	Part Number	Description	Qty Per Oven	Unit	1-10 Ovens	11-50 Ovens	51-100 Ovens	Recommended Service List	e2s V2 Parts Comparison
conneX 12 200/230Volts 50Hz 13A SP - UK (AA) - Stainless - Unique Parts									
39, 52 & 71	PSR156	x12 SP STIRR&P/PLATE KIT SINGLE MAG	1	EA	1	3	6		Unique
52	SC344	PARTITION PLATE - SINGLE MAG	1	EA	1	3	6		Unique
53	DY0081	AIR FILTER COVER	1	EA	1	3	6		Unique
54	30Z1207	FUSE 1in 3A HBC	1	EA	1	3	6	1	Same
55	30Z0231	FUSEHOLDER 1in (13A)	3	EA	3	9	18		Same
56	30Z0456	FUSE 1in 13A HRC	2	EA	2	6	12	1	Same
57	30Z1427	MAGNETRON OVERHEAT STAT	1	EA	1	3	6	1	Same
58	30Z1431	1.2uF 2500V CAPACITOR	1	EA	1	3	6	1	Same
59	P30Z1540	HT TRANSFORMER 200/230V 50Hz	1	EA	1	3	6		Same
61	PSR240	STIRRER MOTOR ASSY	1	EA	1	3	6		Same
63	PSR109	DIODE REPLACEMENT KIT	1	EA	1	3	6	1	Same
67	DB0365	LARGE RAD CAP CLIP	1	EA	1	3	6		Same
68	SY324	X12 CONTROL PANEL ASSY	1	EA	1	3	6		Unique
70	P30Z1415	LOW NOISE MAGNETRON	1	EA	1	3	6	1	Same
73	DR0200	LH CASEWORK	1	EA	1	3	6		Unique
75	DY0105	X12 TOP CASEWORK	1	EA	1	3	6		Unique
76 & 52	PSR157	X12 SP W/GUIDE&P/PLATE	1	EA	1	3	6		Unique
77	PDY0085	X12 DOOR SKIN EU STAIN	1	EA	1	3	6		Unique
Not Shown	31Z1308	CABLE GLAND PG16	1	EA	1	3	6		Same
Not Shown	31Z1309	GLAND NUT PG16	1	EA	1	3	6		Same
Not Shown	DR0201	RH CASEWORK	1	EA	1	3	6		Unique
Not Shown	SR2121	X12 MAINS LEAD AA 13A	1	EA	1	3	6		Same

conneX 12 200/230Volts 50Hz 13A SP - UK (AA) - Carbon Black - Unique Parts

As above conneX 12 200/230Volts 50Hz 13A SP - UK (AA) Stainless but with Black Casework

53	DY0081BLK	AIR FILTER COVER BLACK	1	EA	1	3	6		Unique
68	SY324BLK	CONTROL PANEL ASSY BLACK	1	EA	1	3	6		Unique
73	DR0200BLK	LH CASEWORK BLACK	1	EA	1	3	6		Unique
75	DY0105BLK	X12 TOP CASEWORK BLACK	1	EA	1	3	6		Unique
77	PDY0085BLK	X12 DOOR SKIN EU BLACK	1	EA	1	3	6		Unique
Not Shown	DR0201BLK	RH CASEWORK BLACK	1	EA	1	3	6		Unique

conneX 12 200/230Volts 50Hz 13A SP - AZ (AV) - Stainless - Unique Parts

As above conneX 12 200/230Volts 50Hz 13A SP - UK (AA) Stainless with different Power Cable

Not Shown	SR2129	X12 MAINS LEAD AV 15A	1	EA	1	3	6		Unique
-----------	--------	-----------------------	---	----	---	---	---	--	--------

conneX 12 200/230Volts 50Hz 13A SP - AZ (AV) - Carbon Black - Unique Parts

As above conneX 12 200/230Volts 50Hz 13A SP - AZ (AV) Stainless but with UK Carbon Black Casework

--	--	--	--	--	--	--	--	--	--

conneX 12 200/230Volts 50Hz 16A SP - EU (AB) - Stainless - Unique Parts

As above conneX 12 200/230Volts 50Hz 13A SP - UK (AA) Stainless with different Power Cable

Not Shown	SR2122	X12 MAINS LEAD AB 16A SCHUKO PLUG	1	EA	1	3	6		Same
-----------	--------	-----------------------------------	---	----	---	---	---	--	------

conneX 12 200/230Volts 50Hz 16A SP - EU (AB) - Carbon Black - Unique Parts

As above conneX 12 200/230Volts 50Hz 13A SP - EU (AB) Stainless but with UK Carbon Black Casework

--	--	--	--	--	--	--	--	--	--

conneX 12 200/230Volts 50Hz 16A SP - EU (BD) - Stainless - Unique Parts

As above conneX 12 200/230Volts 50Hz 13A SP - UK (AA) Stainless with differences below

Not Shown	31Z1255	CABLE GLAND BLACK PG21	1	EA	1	3	6		Same
Not Shown	31Z1256	NUT FOR CABLE GLAND PG21	1	EA	1	3	6		Same
Not Shown	SR2123	X12 MAINS LEAD BD 16A RA RED PLUG	1	EA	1	3	6		Same

conneX 12 200/230Volts 50Hz 16A SP - EU (BD) - Carbon Black - Unique Parts

As above conneX 12 200/230Volts 50Hz 16A SP - EU (BD) Stainless but with UK Carbon Black Casework

--	--	--	--	--	--	--	--	--	--

Merrychef conneX 12 Oven

Recommended Parts List

Recommended Min Stock Holding & Service List

Service Manual Exploded View	Part Number	Description	Qty Per Oven	Unit	1-10 Ovens	11-50 Ovens	51-100 Ovens	Recommended Service List	e2s V2 Parts Comparison
------------------------------	-------------	-------------	--------------	------	------------	-------------	--------------	--------------------------	-------------------------

conneX 12 200/230Volts 50Hz 16A HP - EU (BD) - Stainless - Unique Parts
As above conneX 12 200/230Volts 50Hz 13A SP - UK (AA) Stainless with differences below

39, 52 & 71	PSR141	x2 STIRR&P/PLATE KIT DUAL MAG	1	EA	1	3	6		Same
52	SB363	PARTITION PLATE - DUAL MAG	1	EA	1	3	6		Same
57	30Z1427	MAGNETRON OVERHEAT STAT	2	EA	2	6	12	1	Same
58	30Z1431	1.2uF 2500V CAPACITOR	2	EA	2	6	12	1	Same
59	P30Z1540	HT TRANSFORMER 200/230V 50Hz	2	EA	2	6	12		Same
61	PSR240	STIRRER MOTOR ASSY	2	EA	2	6	12		Same
63	PSR109	DIODE REPLACEMENT KIT	2	EA	2	6	12	1	Same
67	DB0365	LARGE RAD CAP CLIP	2	EA	2	6	12		Same
70	P30Z1415	LOW NOISE MAGNETRON	2	EA	2	6	12	1	Same
76 & 52	PSR317	WAVEGUIDE & P/PLATE KIT	2	EA	2	6	12		Same
Not Shown	31Z1255	CABLE GLAND BLACK PG21	1	EA	1	3	6		Same
Not Shown	31Z1256	NUT FOR CABLE GLAND PG21	1	EA	1	3	6		Same
Not Shown	SR2123	X12 MAINS LEAD BD 16A RA RED PLUG	1	EA	1	3	6		Same

conneX 12 200/230Volts 50Hz 16A HP - EU (BD) - Carbon Black - Unique Parts
As above conneX 12 200/230Volts 50Hz 16A HP - EU (BD) Stainless but with UK Carbon Black Casework

--	--	--	--	--	--	--	--	--	--

conneX 12 200/230Volts 50Hz 32A HP - EU (GC) - Stainless - Unique Parts
As above conneX 12 200/230Volts 50Hz 16A HP - EU (BD) Stainless with different Power Cable

Not Shown	SR2119	X12 MAINS LEAD GC 32A RED PLUG	1	EA	1	3	6		Same
-----------	--------	--------------------------------	---	----	---	---	---	--	------

conneX 12 200/230Volts 50Hz 32A HP - EU (GC) - Carbon Black - Unique Parts
As above conneX 12 200/230Volts 50Hz 32A HP - EU (GC) Stainless but with UK Carbon Black Casework

--	--	--	--	--	--	--	--	--	--

conneX 12 200/230Volts 50Hz 32A HP - EU (HE) - Stainless - Unique Parts
As above conneX 12 200/230Volts 50Hz 16A HP - EU (BD) Stainless with different Power Cable

Not Shown	SR2120	X12 MAINS LEAD HE 32A BLUE PLUG	1	EA	1	3	6		Same
-----------	--------	---------------------------------	---	----	---	---	---	--	------

conneX 12 200/230Volts 50Hz 32A HP - EU (HE) - Carbon Black - Unique Parts
As above conneX 12 200/230Volts 50Hz 32A HP - EU (HE) Stainless but with UK Carbon Black Casework

--	--	--	--	--	--	--	--	--	--

conneX 12 200/230Volts 50Hz 32A HP - AE (GC) - Stainless (Hardee's) - Unique Parts
As above conneX 12 200/230Volts 50Hz 32A HP - EU (GC) Stainless

--	--	--	--	--	--	--	--	--	--

conneX 12 200/230Volts 50Hz 32A HP - AZ (GK) - Stainless - Unique Parts
As above conneX 12 200/230Volts 50Hz 32A HP - EU (BD) Stainless with different Power Cable

Not Shown	SR2126	X12 MAINS LEAD GK	1	EA	1	3	6		Same
-----------	--------	-------------------	---	----	---	---	---	--	------

conneX 12 200/230Volts 50Hz 32A HP - AZ (GK) - Carbon Black - Unique Parts
As above conneX 12 200/230Volts 50Hz 32A HP - AZ (GK) Stainless but with UK Carbon Black Casework

--	--	--	--	--	--	--	--	--	--

conneX 12 220/230Volts 50Hz 32A HP - AZ (HM) - Stainless - Unique Parts
As above conneX 12 200/230Volts 50Hz 32A HP - EU (BD) Stainless with different Power Cable

Not Shown	SR2130	X12 MAINS LEAD HM 32A	1	EA	1	3	6		Same
-----------	--------	-----------------------	---	----	---	---	---	--	------

conneX 12 200/230Volts 50Hz 32A HP - AZ (HM) - Carbon Black - Unique Parts
As above conneX 12 200/230Volts 50Hz 32A HP - AZ (HM) Stainless but with UK Carbon Black Casework

--	--	--	--	--	--	--	--	--	--

Merrychef conneX 12 Oven

Recommended Parts List

Recommended Min Stock Holding & Service List

Service Manual Exploded View	Part Number	Description	Qty Per Oven	Unit	1-10 Ovens	11-50 Ovens	51-100 Ovens	Recommended Service List	e2s V2 Parts Comparison
------------------------------	-------------	-------------	--------------	------	------------	-------------	--------------	--------------------------	-------------------------

conneX 12 208/240Volts 60Hz 15A SP - US (SX) - Stainless - Unique Parts

39, 52 & 71	PSR156	x12 SP STIRR&P/PLATE KIT SINGLE MAG	1	EA	1	3	6		Unique
52	SC344	PARTITION PLATE - SINGLE MAG	1	EA	1	3	6		Unique
53	DY0081	AIR FILTER COVER	1	EA	1	3	6		Unique
54	30Z1443	FUSE 3A UL	1	EA	1	3	6	1	Unique
55	30Z0285	FUSEHOLDER 1 1/4in (13A)	3	EA	3	9	18		Same
56	30Z1507	12A FUSE SLOW/B	2	EA	2	6	12	1	Same
57	30Z1427	MAGNETRON OVERHEAT STAT	1	EA	1	3	6	1	Same
58	30Z1549	0.95uF HV CAPACITOR 2500V	1	EA	1	3	6	1	Same
59	P30Z1558	60Hz TRANS MULTI 208 240	1	EA	1	3	6		Same
61	PSR240	STIRRER MOTOR ASSY	1	EA	1	3	6		Same
63	PSR109	DIODE REPLACEMENT KIT	1	EA	1	3	6	1	Same
67	DB0365	LARGE RAD CAP CLIP	1	EA	1	3	6		Same
68	SY324	X12 CONTROL PANEL ASSY	1	EA	1	3	6		Unique
70	P30Z1415	LOW NOISE MAGNETRON	1	EA	1	3	6	1	Same
73	DR0200	LH CASEWORK	1	EA	1	3	6		Unique
74	DR0201	RH CASEWORK	1	EA	1	3	6		Unique
75	DY0105	X12 TOP CASEWORK	1	EA	1	3	6		Unique
76 & 52	PSR157	X12 SP W/GUIDE&P/PLATE	1	EA	1	3	6		Unique
77	PDY0125	X12 DOOR SKIN US STAIN	1	EA	1	3	6		Unique
Not Shown	31Z1255	CABLE GLAND BLACK PG21	1	EA	1	3	6		Same
Not Shown	31Z1256	NUT FOR CABLE GLAND PG21	1	EA	1	3	6		Same
Not Shown	SR2125	X12 MAINS LEAD SX 15A	1	EA	1	3	6		Same

conneX 12 208/240Volts 60Hz 15A SP - US (SX) - Carbon Black - Unique Parts

As above conneX 12 208/240Volts 60Hz 15A SP - US (SX) Stainless but with Carbon Black Casework

53	DY0081BLK	AIR FILTER COVER BLACK	1	EA	1	3	6		Unique
68	SY324BLK	CONTROL PANEL ASSY BLACK	1	EA	1	3	6		Unique
73	DR0200BLK	LH CASEWORK BLACK	1	EA	1	3	6		Unique
74	DR0201BLK	RH CASEWORK BLACK	1	EA	1	3	6		Unique
75	DY0105BLK	X12 TOP CASEWORK BLACK	1	EA	1	3	6		Unique
77	PDY0125BLK	X12 DOOR SKIN US BLACK	1	EA	1	3	6		Unique

conneX 12 208/240Volts 60Hz 20A SP - US (SN) - Stainless - Unique Parts

As above conneX 12 208/240Volts 60Hz 15A SP - US (SX) Stainless but with different Power Cable

Not Shown	SR2128	X12 MAINS LEAD SN 15A	1	EA	1	3	6		Same
-----------	--------	-----------------------	---	----	---	---	---	--	------

conneX 12 208/240Volts 60Hz 20A HP - US (SN) - Carbon Black - Unique Parts

As above conneX 12 208/240Volts 60Hz 20A SP - US (SN) Stainless but with Carbon Black Casework

--	--	--	--	--	--	--	--	--	--

conneX 12 208/240Volts 60Hz 30A HP - CA (DH) - Stainless - (Tim Horton's) - Unique Parts

As above conneX 12 208/240Volts 60Hz 15A SP - US (SX) Stainless but with differences below

39, 52 & 71	PSR141	x2 STIRR&P/PLATE KIT DUAL MAG	1	EA	1	3	6		Same
52	SB363	PARTITION PLATE - DUAL MAG	1	EA	1	3	6		Same
57	30Z1427	MAGNETRON OVERHEAT STAT	2	EA	2	6	12	1	Same
58	30Z1549	0.95uF HV CAPACITOR 2500V	2	EA	2	6	12	1	Same
59	P30Z1558	60Hz TRANS MULTI 208 240	2	EA	2	6	12		Same
61	PSR240	STIRRER MOTOR ASSY	2	EA	2	6	12		Same
63	PSR109	DIODE REPLACEMENT KIT	2	EA	2	6	12	1	Same
67	DB0365	LARGE RAD CAP CLIP	2	EA	2	6	12		Same
70	P30Z1415	LOW NOISE MAGNETRON	2	EA	2	6	12	1	Same
76 & 52	PSR317	WAVEGUIDE & P/PLATE KIT	2	EA	2	6	12		Same
Not Shown	SR2131	X12 MAINS LEAD DH 30A US STRAIGHT PLUG	1	EA	1	3	6		Same

Merrychef conneX 12 Oven

Recommended Parts List

Recommended Min Stock Holding & Service List

Service Manual Exploded View	Part Number	Description	Qty Per Oven	Unit	1-10 Ovens	11-50 Ovens	51-100 Ovens	Recommended Service List	e2s V2 Parts Comparison
------------------------------	-------------	-------------	--------------	------	------------	-------------	--------------	--------------------------	-------------------------

conneX 12 208/240Volts 60Hz 30A HP - SA (GC) - Stainless (Hardee's) - Unique Parts

39, 52 & 71	PSR141	x2 STIRR&P/PLATE KIT DUAL MAG	1	EA	1	3	6		Same
52	SB363	PARTITION PLATE - DUAL MAG	1	EA	1	3	6		Same
53	DY0081	AIR FILTER COVER	1	EA	1	3	6		Unique
54	30Z1207	FUSE 1in 3A HBC	1	EA	1	3	6	1	Same
55	30Z0231	FUSEHOLDER 1in (13A)	3	EA	3	9	18		Same
56	30Z0456	FUSE 1in 13A HRC	2	EA	2	6	12	1	Same
57	30Z1427	MAGNETRON OVERHEAT STAT	2	EA	2	6	12	1	Same
58	30Z1549	0.95uF HV CAPACITOR 2500V	2	EA	2	6	12	1	Same
59	P30Z1558	60Hz TRANS MULTI 208 240	2	EA	2	6	12		Same
61	PSR240	STIRRER MOTOR ASSY	2	EA	2	6	12		Same
63	PSR109	DIODE REPLACEMENT KIT	2	EA	2	6	12	1	Same
67	DB0365	LARGE RAD CAP CLIP	2	EA	2	6	12		Same
68	SY324	X12 CONTROL PANEL ASSY	1	EA	1	3	6		Unique
70	P30Z1415	LOW NOISE MAGNETRON	2	EA	2	6	12	1	Same
73	DR0200	LH CASEWORK	1	EA	1	3	6		Unique
75	DY0105	X12 TOP CASEWORK	1	EA	1	3	6		Unique
76 & 52	PSR317	WAVEGUIDE & P/PLATE KIT	2	EA	2	6	12		Same
77	PDY0085	X12 DOOR SKIN EU STAIN	1	EA	1	3	6		Unique
Not Shown	31Z1255	CABLE GLAND BLACK PG21	1	EA	1	3	6		Same
Not Shown	31Z1256	NUT FOR CABLE GLAND PG21	1	EA	1	3	6		Same
Not Shown	DR0201	RH CASEWORK	1	EA	1	3	6		Unique
Not Shown	SR2119	X12 MAINS LEAD GC 32A RED PLUG	1	EA	1	3	6		Same

conneX 12 208/240Volts 60Hz 30A HP - US (DF) - Stainless - Unique Parts

As above conneX 12 208/240Volts 60Hz 15A SP - US (SX) - Stainless but with differences below

39, 52 & 71	PSR141	x2 STIRR&P/PLATE KIT DUAL MAG	1	EA	1	3	6		Same
52	SB363	PARTITION PLATE - DUAL MAG	2	EA	2	6	12		Same
57	30Z1427	MAGNETRON OVERHEAT STAT	2	EA	2	6	12	1	Same
58	30Z1549	0.95uF HV CAPACITOR 2500V	2	EA	2	6	12	1	Same
59	P30Z1558	60Hz TRANS MULTI 208 240	2	EA	2	6	12		Same
61	PSR240	STIRRER MOTOR ASSY	2	EA	2	6	12		Same
63	PSR109	DIODE REPLACEMENT KIT	2	EA	2	6	12	1	Same
67	DB0365	LARGE RAD CAP CLIP	2	EA	2	6	12		Same
70	P30Z1415	LOW NOISE MAGNETRON	2	EA	2	6	12	1	Same
76 & 52	PSR317	WAVEGUIDE & P/PLATE KIT	2	EA	2	6	12		Same
Not Shown	SR2124	X12 MAINS LEAD DF 30A US NEMA	1	EA	1	3	6		Same

conneX 12 208/240Volts 60Hz 30A HP - US (DF) - Carbon Black - Unique Parts

As above conneX 12 208/240Volts 60Hz 30A HP - US (DF) Stainless but with Cabon Black Casework

--	--	--	--	--	--	--	--	--	--

conneX 12 208/240Volts 00Hz 30A HP - US (DH) - Stainless - Unique Parts

As above conneX 12 208/240Volts 60Hz 30A HP - US (DF) Stainless with different Power Cable

Not Shown	SR2131	X12 MAINS LEAD DH 30A US STRAIGHT PLUG	1	EA	1	3	6		Same
-----------	--------	--	---	----	---	---	---	--	------

conneX 12 208/240Volts 60Hz 30A HP - US (DH) - Carbon Black - Unique Parts

As above conneX 12 208/240Volts 60Hz 30A HP - US (DH) Stainless but with Cabon Black Casework

--	--	--	--	--	--	--	--	--	--

conneX 12 Service and Upgrade Kits

Not Shown	PSRxxx	PARTS FLIGHT KIT		EA	1	3	6	1	
-----------	--------	------------------	--	----	---	---	---	---	--

Merrychef conneX 12 Oven

Recommended Parts List

Recommended Min Stock Holding & Service List

Service Manual Exploded View	Part Number	Description	Qty Per Oven	Unit	1-10 Ovens	11-50 Ovens	51-100 Ovens	Recommended Service List	e2s V2 Parts Comparison
conneX Accessories									
Not Shown	32Z4079	GASTRONORM 1/4 65mm PAN	1	EA	1	3	6		
Not Shown	32Z4080	e2s S/BASKET 11"x11"		EA	1	3	6		
Not Shown	32Z4081	e2s PERFORATED BASKET 11"x11"		EA	1	3	6		
Not Shown	32Z4088	e2s LINER	1	EA	1	3	6		
Not Shown	32Z4089	e2s S/BASKET QTR SIZE		EA	1	3	6		
Not Shown	32Z4090	e2s S/BASKET HALF SIZE		EA	1	3	6		
Not Shown	32Z4093	e2s S/BASKET 11"x11" GREEN		EA	1	3	6		
Not Shown	32Z4094	e2s S/BASKET 1/2 SIZE GREEN		EA	1	3	6		
Not Shown	32Z4095	e2s S/BASKET 1/4 SIZE GREEN		EA	1	3	6		
Not Shown	32Z4096	e2s LINER GREEN		EA	1	3	6		
Not Shown	32Z4100	e2s SOLID BASKET 11"x11" - RED		EA	1	3	6		
Not Shown	32Z4101	e2s SOLID BASKET 11"x11" - BLUE		EA	1	3	6		
Not Shown	32Z4165	SOLID BASE 11" SQ	1	EA	1	3	6		
Not Shown	32Z4166	MESH BASE 11" SQ		EA	1	3	6		
Not Shown	32Z4175	SOLID BASE 13.5" SQ		EA	1	3	6		
Not Shown	32Z4176	MESH BASE 13.5" SQ		EA	1	3	6		
Not Shown	DB0719	FLAT/GRIDDLE COOK PLATE		EA	1	3	6		
Not Shown	DB0739	FLAT/FLAT COOK PLATE	1	EA	1	3	6		
Not Shown	DB0819	SINGLE SIDED COOK PLATE - USA ONLY	1	EA	1	3	6		
Not Shown	DR0150	e2s PIZZA TRAY		EA	1	3	6		
Not Shown	PSB179	JET PLATE & WIRE RACK COMBINED		EA	1	3	6		
Not Shown	SR318	GUARDED PADDLE e2s	1	EA	1	3	6		

NOTES: **NOTE-1**