



ConvoUpdate

-

User guide

Installation of ConvoUpdate

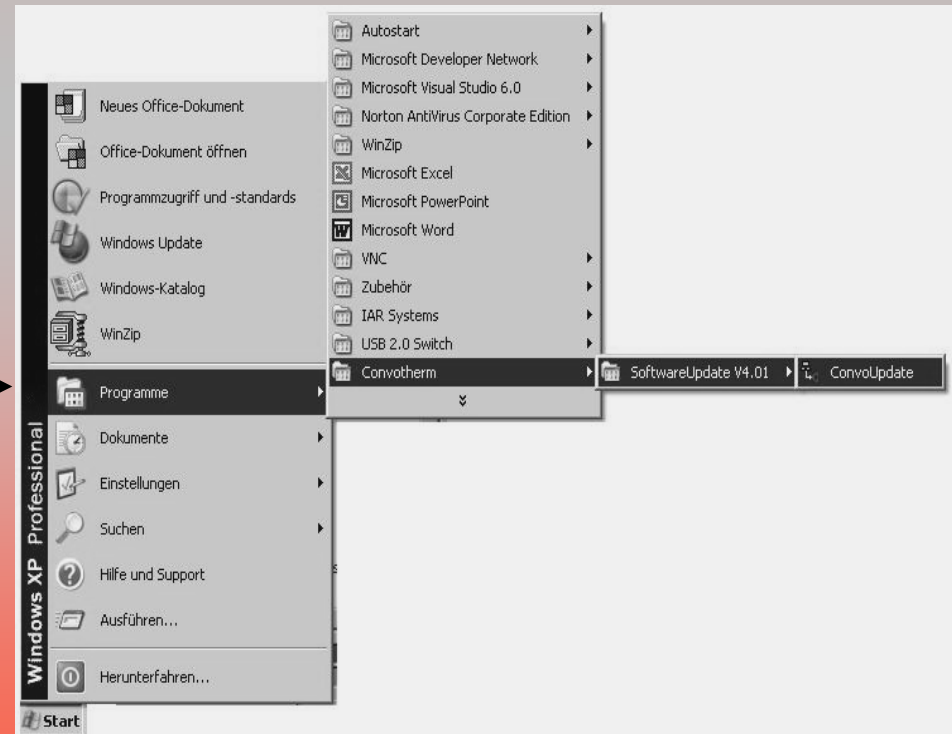
1. - Extract the Zip file



2. - Execute the file Setupex.exe

-> Follow the install instructions

3. - Start the program



Clues to ConvoUpdate

- Update has to execute for SM and BM software together
- texts, character sets and cookbooks will be uploaded for all available languages
- Update-process lasts 5 till 8 minutes depending on complexity
- old cookbooks will delete and are nonreversible
- Before update process:
 - shut off the Convotharm
 - remove the X12 connector at SM
 - and connect the RS232 cable between the PC/laptop and SM
- Please perform a C06/new init after the update process (gas values have to reconfigure)

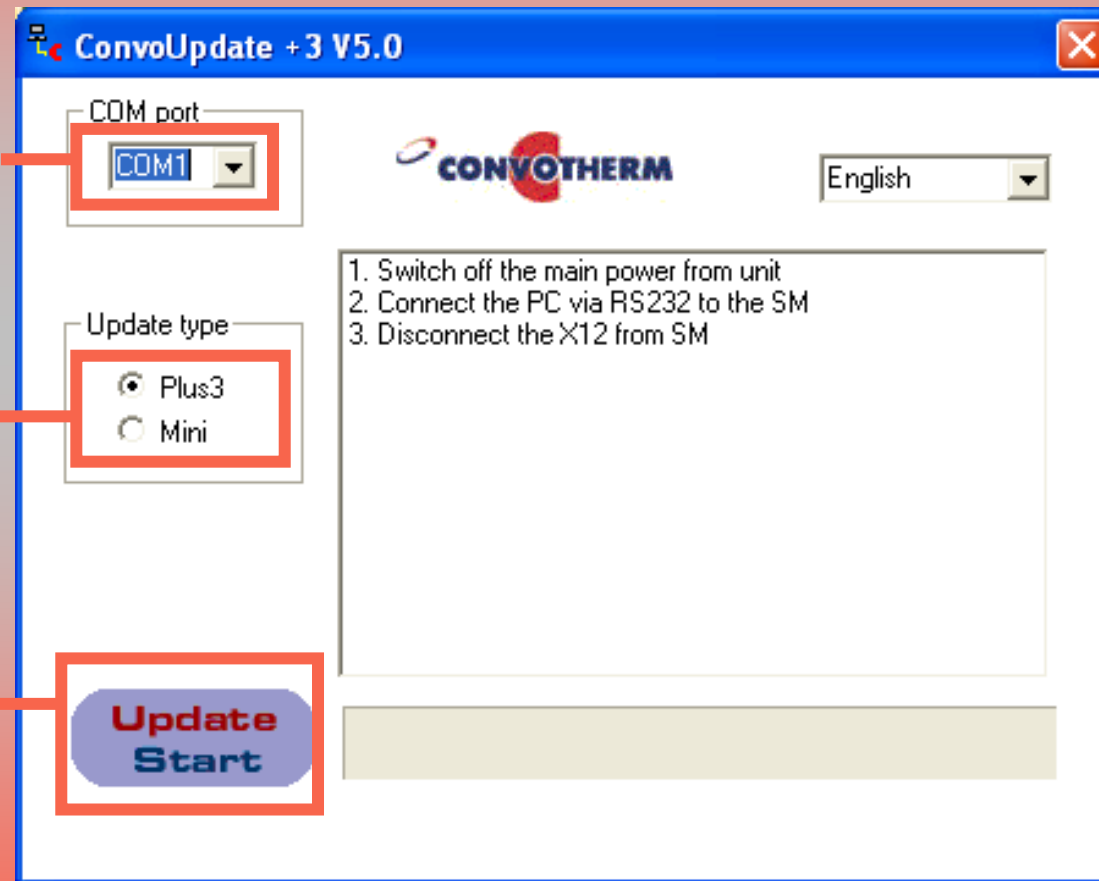
(do not forget to put in the X12-connector to SM)

Use of ConvoUpdate

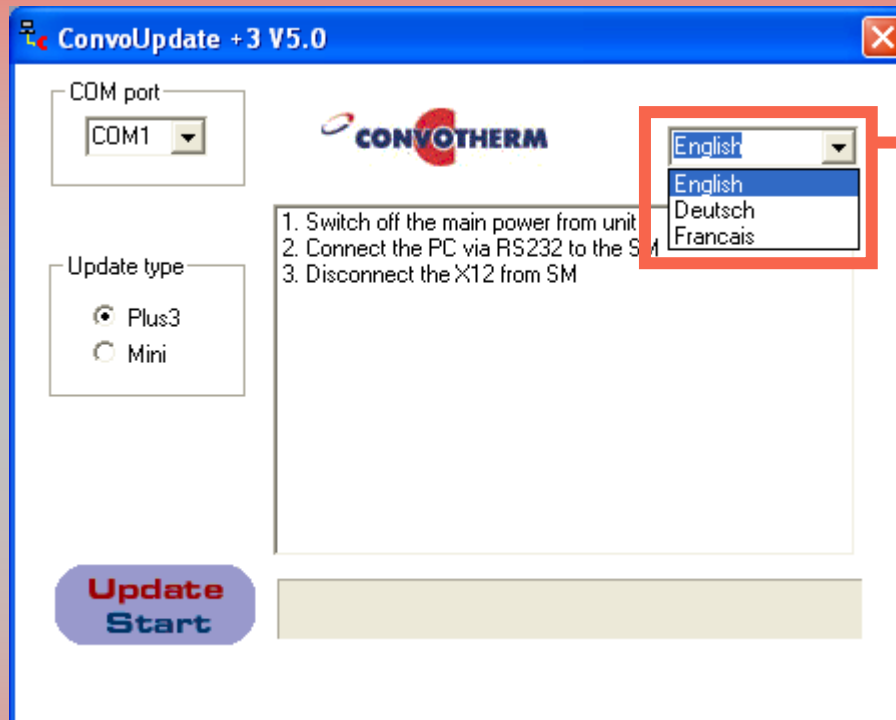
Configure the COM port

Option for OES Mini update

Update
-
process
starts

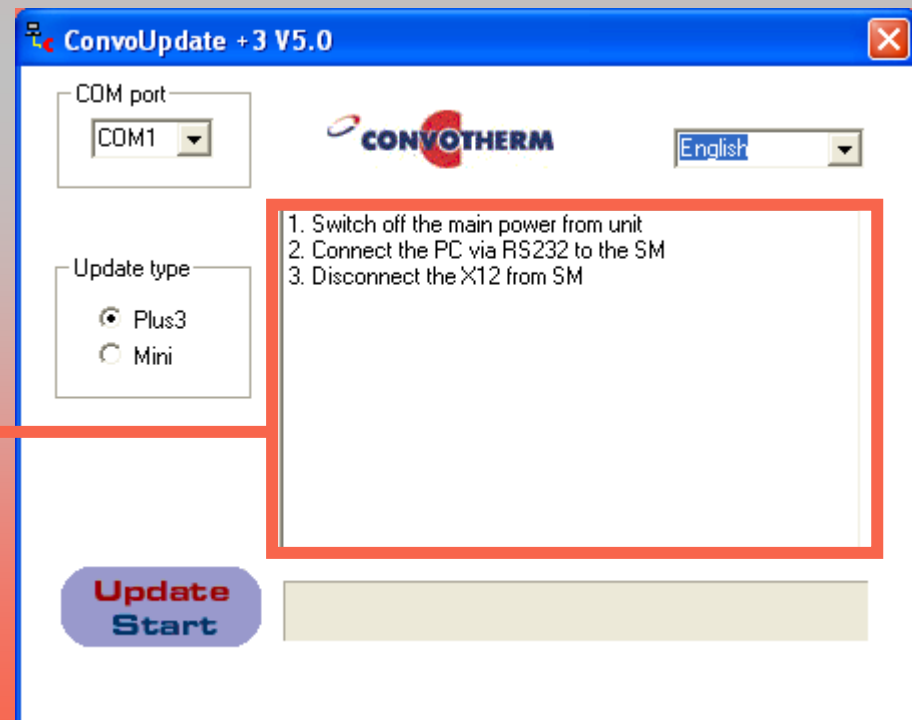


Change the language



Select the language

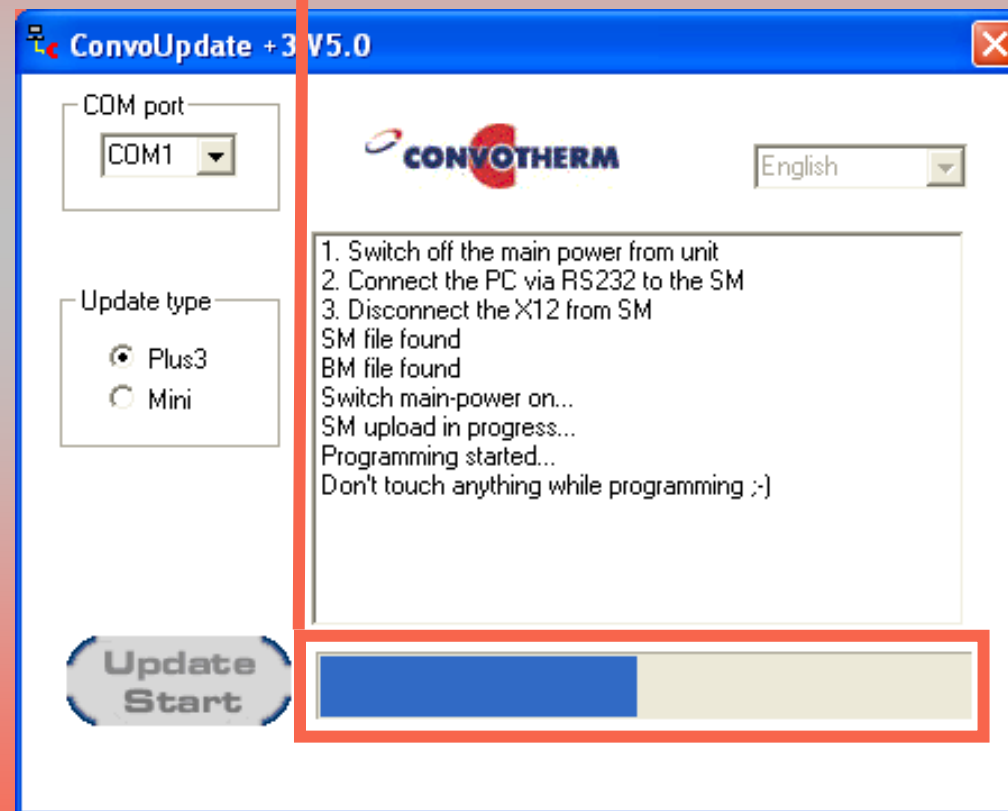
Language changed!



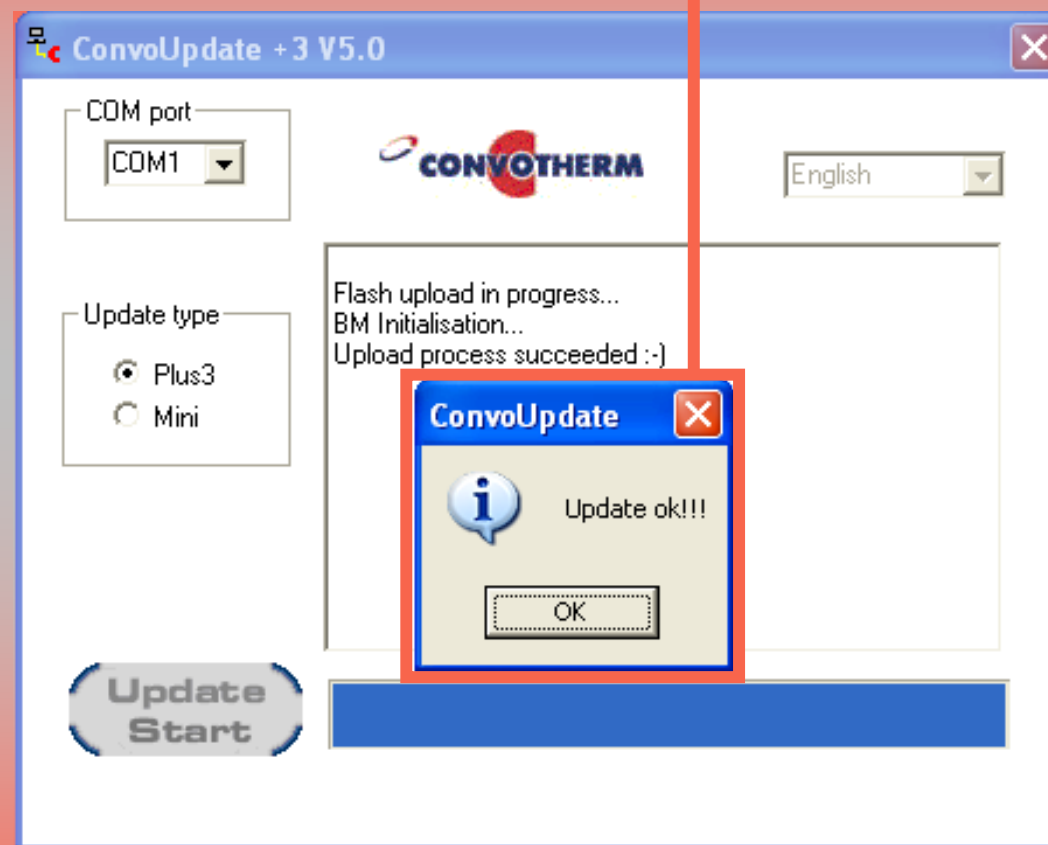
ConvoUpdate in progress...

The progress bar
should refresh
all 10 till 15
seconds

Then, all is OK!



Update finished successful...



USB - to - Serial adapter

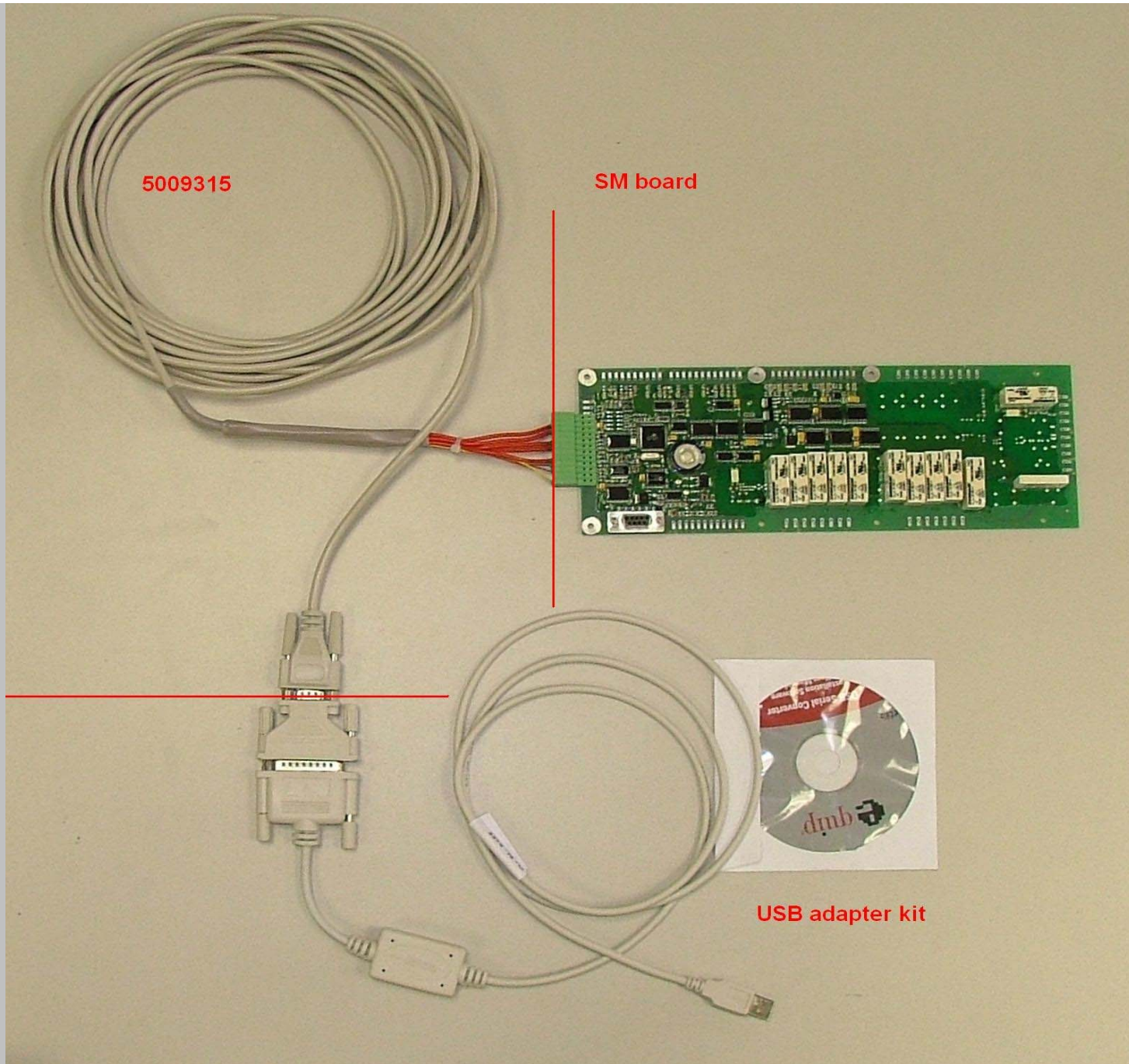
Installation and application

Article number: 5019200

5009315

SM board

USB adapter kit



Installation procedure

- 1. - Installation of the driver from CD-ROM**
- 2. - Connection between the USBtoSer adapter and PC**
- 3. - Configuration of the COM interface**
- 4. >> Ready for action <<**

